



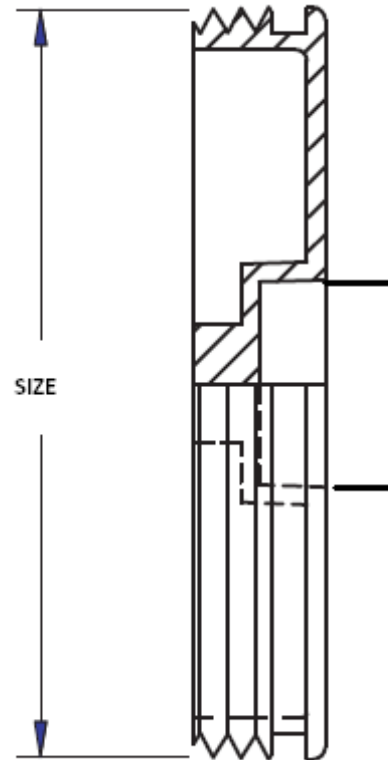
4700 W. 160th St.
Cleveland, OH 44135
PH:800-321-9532
FX:800-321-9535
www.oatey.com

BRASS CLEANOUT PLUGS



TECHNICAL SPECIFICATION

TECHNICAL SPECIFICATION: Oatey Brass Cleanout Plugs are made of brass and are for use as drain access covers. Cleanout Plugs are designed with a raised square head, as required by some Southern Plumbing Codes. Raised head allows for easy removal with slip joint pliers.



PHYSICAL/CHEMICAL PROPERTIES

Material Brass

PRODUCT NUMBER	DESCRIPTION	SIZE	PACK	CARTON WEIGHT
42369	1-1/2" 185 Brass Cleanout Plug	1.5"	12	1 lb.
42370	2" 185 Brass Cleanout Plug	2"	12	2 lbs.
42371	2-1/2" 185 Brass Cleanout Plug	2.5"	12	3 lbs.
42372	3" 185 Brass Cleanout Plug	3"	12	5 lbs.
42373	3-1/2" 185 Brass Cleanout Plug	3.5"	12	6 lbs.
42374	4" 185 Brass Cleanout Plug	4"	12	7 lbs.